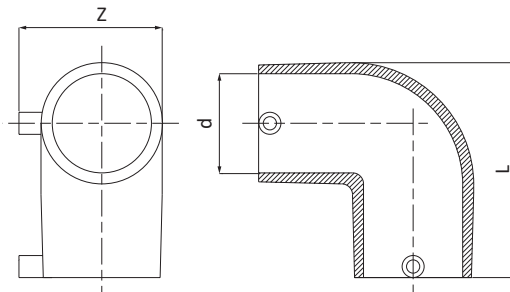




CODE 3004

Gomito a 90° - Elbow 90° - Coude à 90° - Codo a 90° - Winkel 90° - Колено 90°
PE100 - S5 Gas - PN 16 20°C



PE100 - SDR11 - S5
ACQUA: PFA (PN)=16 bar 20°C
GAS: MOP=10 bar; In Italia MOP=5 bar (D.M. 24/11/84, D.M. 16/4/2008 e successive modifiche)
Per il tempo di saldatura da utilizzare con tubo SDR26 contattare direttamente Unidelta.

PE100 - SDR11 - S5
WATER: PFA (PN)=16 bar 20°C
GAS: MOP=10 bar; in Italy MOP=5 bar (D.M. 24/11/84, D.M. 16/4/2008 and further modification)
Contact Unidelta directly for the welding time to be used with SDR26 pipe.

CODE	DIM dxd [mm]	L [mm]	Z [mm]	W-SDR	PACK
3004020000001	20x20	70	50	≤ 11	20
3004025000001	25x25	81	54	≤ 11	20
3004033000001	32x32	82	63	≤ 11	20
3004041000001	40x40	100	67	≤ 17	12
3004051000001	50x50	114	81	≤ 17	8
3004064000001	63x63	141	100	≤ 17	10
3004075000001	75x75	158	110	≤ 17	6
3004090000001	90x90	190	133	≤ 17	5
3004110000001	110x110	216	154	≤ 17	3
3004125000001	125x125	241	178	≤ 17	2
3004140000001	140x140	280	180	≤ 26	3
3004160000001	160x160	298	217	≤ 26	2
3004180000001	180x180	323	240	≤ 26	1